



The Department of Gastroenterology and Hepatology presents:

6th Annual Sawyer International Pancreato-Biliary and Gastrointestinal Cancer Symposium

Featuring live endoscopy, case-based didactics,
and hands-on interactive learning

December 5-6, 2025

Robert C. Hickey Auditorium
Floor 11, R. Lee Clark Clinic
1515 Holcombe Boulevard
The University of Texas
MD Anderson Cancer Center
Houston, Texas

Conference Chair

Jeffrey H. Lee, M.D., M.P.H.

Co-Directors

Emmanuel S. Coronel, M.D.
Phillip S. Ge, M.D.

Planning Committee

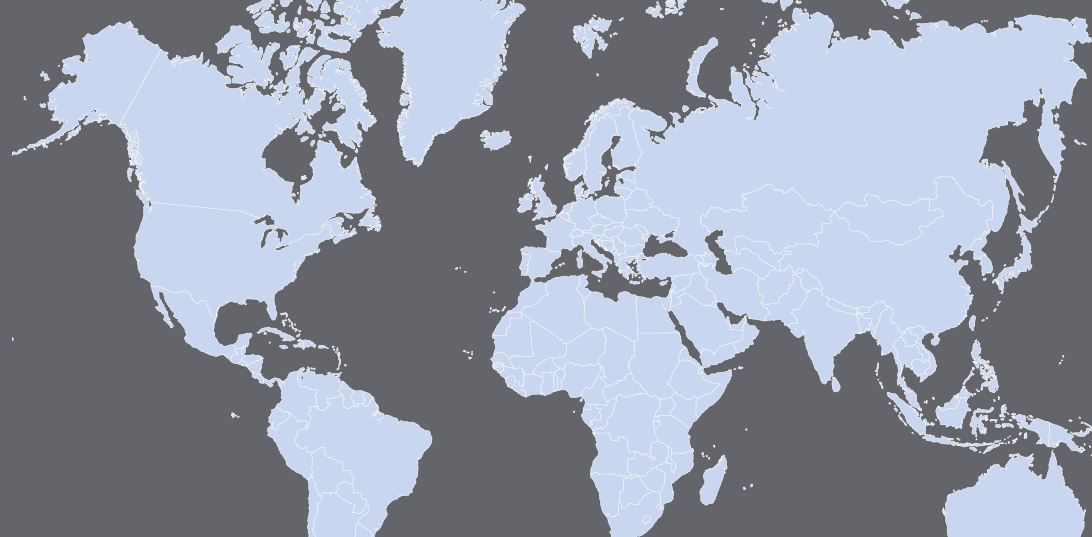
Jordan Hughes, MSN, RN
Maria Ellionore Jarbrink Sehgal, M.D., Ph.D.
Brian Weston, M.D.



THE UNIVERSITY OF TEXAS

**MD Anderson
Cancer Center**

Making Cancer History®



GOAL

Over the past decade, there have been remarkable advances in understanding hepato-biliary and gastrointestinal cancers, accompanied by significant improvements in endoscopic techniques and devices. This educational activity will feature state-of-the-art didactic lectures, expert panel discussions, live endoscopy demonstrations with interactive Q&A sessions, and hands-on learning. Participants will gain updated knowledge on the diagnosis and management of gastrointestinal and pancreaticobiliary cancers and explore innovative endoscopic procedures and technologies within a multidisciplinary framework. During this international symposium, leaders from around the world will present research findings, share clinical experiences, and discuss evidence-based recommendations regarding the management of pancreatico-biliary and gastrointestinal cancers.

EDUCATIONAL OBJECTIVES

At the conclusion of this educational activity, participants should be able to:

- Understand endoscopic diagnosis and management of luminal gastrointestinal premalignant conditions and cancers.
- Learn how to safely resect luminal gastrointestinal cancers.
- Identify the ideal endoscopic methods for palliation of gastrointestinal cancers.
- Discuss novel endoscopic technologies and techniques to address pancreaticobiliary cancers within a multidisciplinary framework.

EDUCATIONAL METHODS

- Lectures
- Panel discussions
- Case studies and live endoscopy demonstration
- Question and answer sessions
- Interactive hands-on sessions

TARGET AUDIENCE

This symposium should be of value to gastroenterologists, medical oncologists, surgeons, interventional radiologists, internists, nurses, APPs, and endoscopy technicians.

EVALUATION

A course evaluation survey will provide participants with the opportunity to comment on the value of the program content to their practice decisions, performance improvement activities, or possible impact on patient care. Participants can comment on any perceived commercial bias in the presentations as well as to identify future educational topics.

PLANNING COMMITTEE

Conference Chair

Jeffrey H. Lee, M.D., M.P.H.
Professor and Chair
Gastroenterology and Hepatology

Co-Directors

Emmanuel S. Coroneil, M.D.
Associate Professor
Gastroenterology and Hepatology

Phillip S. Ge, M.D.
Associate Professor
Gastroenterology and Hepatology

Committee Members

Maria Ellionore Jarbrink Sehgal, M.D., Ph.D
Associate Program Director
Gastroenterology Fellowship Program

Jordan Hughes, MSN, RN
Associate Director
Endoscopy Center

Brian Weston, M.D.
Program Director
Advanced Endoscopy Fellowship Program

Program

Friday, December 5, 2025

6:45 a.m. Breakfast and registration

7:45 a.m. **Welcoming remarks**

SECTION A - PANCREATICOBILIARY

Moderators: Brian Weston and Joseph Zhang

8 a.m. **State of the Art in Endoscopic Management of Complex Biliary Strictures**
Jeffrey H. Lee

8:15 a.m. **State of the Art in Cholangiocarcinoma**
Milind Javle

8:30 a.m. **The “Difficult” ERCP – Precut or EUS?**
Yousuke Nakai

8:45 a.m. **“Endohepatology” Is it Ready For Primetime?**
Marvin Ryou

9 a.m. **Q&A**

9:15 a.m. **Refreshments/Networking Break in the Exhibit Hall**

9:30 a.m. **Live Endoscopy**
Emmanuel Coronel, Phillip Ge, Jeffrey Lee, and George Wahba

11:30 a.m. **Working lunch – An APP’s approach to gastrointestinal neuroendocrine tumors**
Gene Liaw

SECTION B - LUMINAL

Moderators: Maria Ellionore Jarbrink Sehgal and Gottumukkala S. Raju

12:30 p.m. **Live Endoscopy**
Emmanuel Coronel, Phillip Ge, Jeffrey Lee, and George Wahba

2:30 p.m. **State of the Art in Barrett’s Esophagus**
Amitabh Chak

2:45 p.m. **Endoscopy and GI Genetics**
Luigi Ricciardello

3 p.m. **Rectal Cancer – Surgery, Endoscopy or Total Neoadjuvant Therapy?**
J. Joshua Smith

3:15 p.m. **Q&A**

3:30 p.m. **Refreshments/Networking Break in the Exhibit Hall**

FELLOW CASE PRESENTATIONS

Moderators: R. Tomás DaVee and Thomas McCarty

3:45 p.m. **Fellow Case Presentation – Baylor College of Medicine**

4 p.m. **Fellow Case Presentation – UT Health Houston**

4:15 p.m. **Fellow Case Presentation – Houston Methodist Hospital**

4:30 p.m. **Fellow Case Presentation – MD Anderson Cancer Center**

4:45 p.m. **Wrap up**

5 p.m. **Adjourn**

Program

Saturday, December 6, 2025

7 a.m. Breakfast and registration

7:45 a.m. **Welcoming Remarks**

SECTION C - ENDOSCOPIC TECHNOLOGY AND UPDATES

Moderators: Jeffrey H. Lee and George Wahba

8 a.m. **EUS Guided Ablation – What’s New?**
Dong Wan Seo

8:15 a.m. **EUS Guided Biliary Access – Applications and Controversies**
Tae Jun Song

8:30 a.m. **How to Approach Gastric Varices – Endoscopy or IR?**
Kalpesh Patel

8:45 a.m. **Beyond ESD – Novel Approaches to Endoscopic Resection**
Mohamed Othman

9 a.m. **Quality in EUS and ERCP**
William Ross

9:15 am **Break/Transition to Hands On**

9:30 a.m. **Luminal Hands-On**

12:30 p.m. **Lunch**

1 p.m. **Pancreaticobiliary Hands-On**

4 p.m. **Wrap up**

4:15 p.m. **Adjourn**

MD Anderson Faculty and Moderators

Emmanuel Coronel

Associate Professor
Department of Gastroenterology
and Hepatology

Phillip S. Ge

Associate Professor
Department of Gastroenterology
and Hepatology

Jordan Hughes

Associate Director
Endoscopy Center

Milind Javle

Professor
Department of Gastrointestinal
Medical Oncology

Jeffrey H. Lee

Professor and Chair
Department of Gastroenterology
and Hepatology

Gene Liaw

Physician Assistant
Department of Gastroenterology
and Hepatology

Gottumukkala S. Raju

Professor
Department of Gastroenterology and
Hepatology

Luigi Ricciardiello

Professor
Department of Gastroenterology
and Hepatology

William Ross

Professor and Vice Chair
Department of Gastroenterology
and Hepatology

Maria Ellionore Jarbrink Sehgal

Associate Professor
Department of Gastroenterology
and Hepatology

J. Joshua Smith

Professor and Chair
Department of Colorectal Surgery

George Wahba

Assistant Professor
Department of Gastroenterology
and Hepatology

Brian Weston

Professor
Department of Gastroenterology
and Hepatology

Joseph Zhang

Assistant Professor
Department of Gastroenterology
and Hepatology

Guest Faculty

Amitabh Chak

President, American Society
for Gastrointestinal Endoscopy
Professor
Division of Gastroenterology and Liver Diseases
Case Western Reserve University
Cleveland, Ohio

Sunil Dacha

Underwood Center for Digestive Health
Houston Methodist Hospital –
Weill Cornell Medical College
Houston, Texas

R. Tomás DaVee

Associate Professor
Division of Gastroenterology, Hepatology
and Nutrition
UTHealth Houston
Houston, Texas

Salmaan Jawaid

Assistant Professor
Division of Gastroenterology and Hepatology
Baylor University Medical Center
Houston, Texas

Tara Keihanian

Assistant Professor
Division of Gastroenterology and Hepatology
Baylor University Medical Center
Houston, Texas

Thomas McCarty

Underwood Center for Digestive Health
Houston Methodist Hospital –
Weill Cornell Medical College
Houston, Texas

Yousuke Nakai

Professor and Chair
Department of Intestinal Medicine,
Institute of Gastroenterology
Tokyo Women's Medical University
Tokyo, Japan

Mohamed Othman

Professor and Chair
Division of Gastroenterology and Hepatology
Baylor University Medical Center
Houston, Texas

Kalpesh Patel

Associate Professor
Division of Gastroenterology and Hepatology
Baylor University Medical Center
Houston, Texas

Marvin Ryou

Associate Professor
Division of Gastroenterology, Hepatology
and Endoscopy
Brigham and Womens Hospital –
Harvard Medical School
Boston, Massachusetts

Dong Wan Seo

Professor
Division of Gastroenterology,
Asan Medical Center
Ulsan University College of Medicine
Seoul, South Korea

Tae Jun Song

Professor
Division of Gastroenterology,
Asan Medical Center
Ulsan University College of Medicine
Seoul, South Korea

REGISTRATION INFORMATION

On-site registration opens at 7 a.m. on Friday, December 5, 2025. The Symposium will begin at 7:45 a.m. on Friday, December 5, 2025, and adjourn at 4 p.m. on Saturday, December 6, 2025.

Early registration is encouraged as space and materials are limited. Please see the registration form for applicable fees.

The full conference registration fee includes the tuition, program, continental breakfast, breaks, lunches, and reception.

Please visit <https://cameroams.com/md-anderson-2025-registration/> to view more information and to register.

The deadline for early registration is Friday, November 21, 2025.

We accept the following forms of payment:

- Credit Cards (MasterCard, VISA, and American Express)

A confirmation email will be sent the week of the conference.

REFUND/CANCELLATION POLICY

The organizing committee reserves the right to cancel activities prior to the scheduled date, if low enrollment or other circumstances make it necessary. Each registrant will be notified by mail, e-mail, or at the phone or fax numbers given on the registration form. In case of activity cancellation, the liability of the department is limited to the registration fee.

The department will refund the full registration fee.

The department and organizing committee reserve the right to limit the number of participants in a program and is not responsible for any expenses incurred by an individual whose registration is not confirmed and for whom space is not available.

SPECIAL ASSISTANCE

Contact ky@cameroams.com if you have any special dietary or ADA accommodation needs.

ACCOMMODATIONS

Below is a list of recommended hotels near the conference venue:

- Houston Marriott Medical Center, 6580 Fannin Street, Houston, Texas (5 min. drive; 10 min walk)
- The Westin Houston Medical Center, 1709 Dryden Rd., Houston, Texas (5 min. drive; 10 min. walk)
- Hilton Houston Plaza/Medical Center, 6633 Travis St., Houston, Texas (6 min. drive; 14 min. walk)

GROUND TRANSPORTATION

Houston is served by two airports, George Bush Intercontinental (IAH) and William P. Hobby (HOU). Below are the options for ground transportation to and from the airports to the Medical Center.

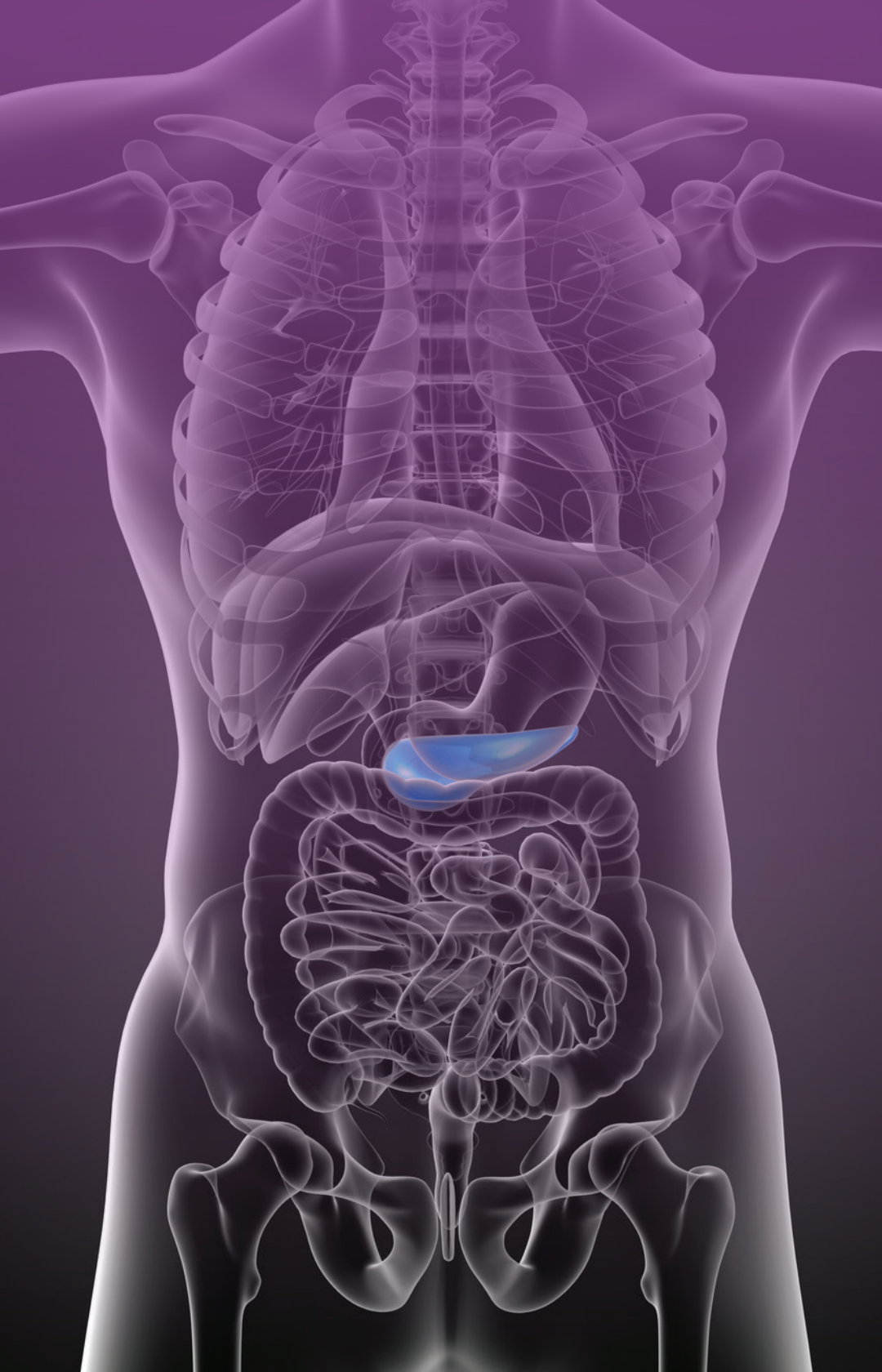
- Uber and Lyft
- Taxicabs: Yellow Cab 713-236-1111; Fiesta Cab 713-225-2666
- Super Shuttle: For more information, call toll free at 800-258-3826, or on-line at SuperShuttle.com

Please let us know what specific topics, issues or questions you wish to see addressed or emphasized in this activity.

E-mail ky@cameroams.com. All responses will be forwarded to the Symposium Directors for consideration.

The organizing committee has implemented a process whereby everyone who is in a position to control the content of an educational activity must disclose all relevant financial relationships with any commercial interest that could potentially affect the information presented. The organization committee also requires that all faculty disclose any unlabeled use or investigational use (not yet approved for any purpose) of pharmaceutical and medical device products. Specific disclosure will be made to the participants prior to the educational activity. Agendas are subject to change because we are always striving to improve the quality of your educational experience. MD Anderson may substitute faculty with comparable expertise on rare occasions necessitated by illness, schedule conflicts, and so forth.

Photographing, audio taping, and videotaping are prohibited.



REGISTRATION FEES

Physicians (M.D., Ph.D., D.O.)

Before 11/15/25 \$50.00

After 11/15/25..... \$75.00

Nurses (R.N., N.P., L.V.N.)

Before 11/15/25 \$25.00

After 11/15/24..... \$50.00

Techs

Before 11/15/25 \$20.00

After 11/15/25..... \$30.00

Students/Fellows/Residents* Exempt

*A letter of introduction from the program director or chairperson with registration form is required to claim this reduced fee.



Registration details can be found at
<https://cameroams.com/md-anderson-2025-registration/>

Continuing Professional Education – Unit 1781
The University of Texas MD Anderson Cancer Center
176700/30/129281/41
PO Box 301407
Houston, TX 77230-1407

Non-Profit Org.
U.S. Postage
PAID
Houston, TX
Permit No. 7052